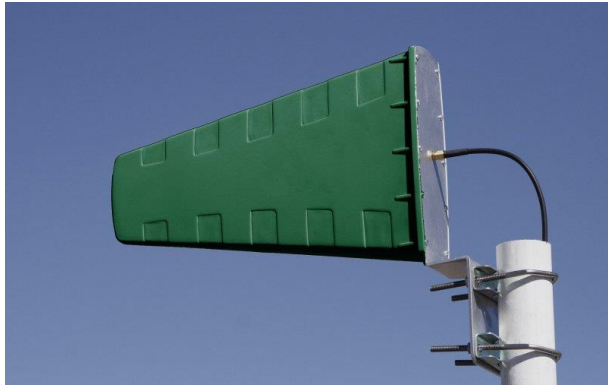


# Wideband Directional Antenna

2000 – 6000 MHz

Product Code: LPDA-A0074

## SPECIFICATIONS:



<b>Product code:</b>	
LPDA-A0074	SMA (f) connector
LPDA-A0074-01	N-type (f) connector
<b>Electrical:</b>	
Frequency range	2000 – 6000 MHz
VSWR	< 2.0:1
Feed power handling	20 W
Nominal input impedance	50 Ω
Gain (typical)	8.5 dBi
E-plane 3 dB beamwidth	50°
H-plane 3 dB beamwidth	60°
Polarisation	Linear (vertical or horizontal)
<b>Mechanical:</b>	
Dimensions (l x w x d)	380 mm x 320 mm x 90 mm
Weight	800 g excluding bracket
Material	ABS and aluminium
Mounting method	Pole or wall-mount
<b>Environmental: designed to meet the following specifications</b>	
Wind survival	160 km/h
Temperature operational	-20 °C to +70 °C
Shock	40 G at 10 msec
Water ingress rating	IP65 (NEMA 4X)

## PRODUCT FEATURES:

- Wideband
- Low and stable VSWR
- Rugged construction
- Vertical or horizontal polarisation
- Covers various international wireless bands
- Compact and suitable for indoor and outdoor applications

## PRODUCT DESCRIPTION:

The LPDA-A0074 high gain wideband directional antenna covers the 2 to 6 GHz band. Its configuration is suitable for various cellular and wireless communication systems as well as the 2.4 GHz and 5.8 GHz ISM bands.

# Wideband Directional Antenna

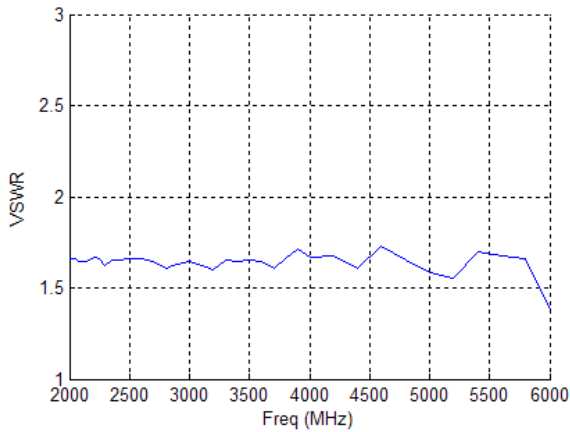
2000 – 6000 MHz

Product Code: LPDA-A0074

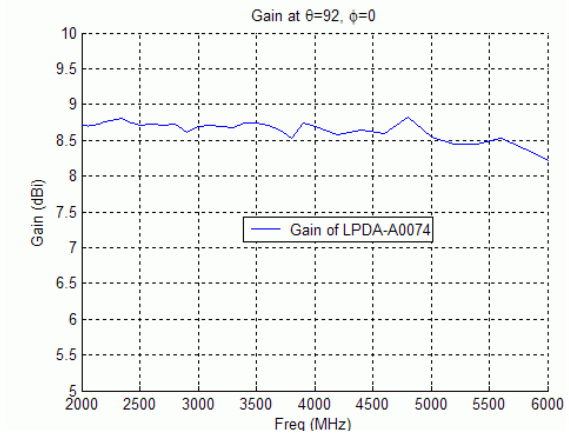
VERSION: 2.3

## VSWR AND GAIN GRAPHS:

### Typical VSWR:

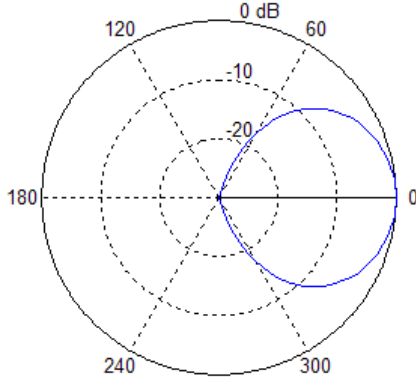


### Gain:

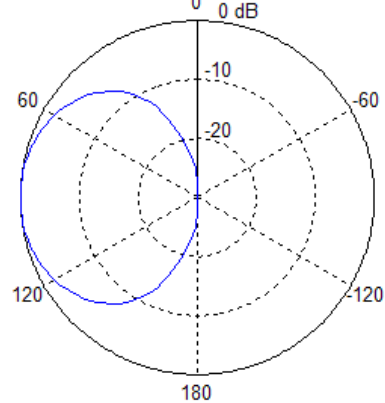


## Radiation patterns:

### E-plane – Elevation:



### H-plane – Azimuth:



**AUTHORIZED USA DISTRIBUTION BY:**

Cyntony Corporation  
195 Follen Road  
Lexington, Massachusetts  
sales@cyntony.com  
781-430-0675



**GAIN THE ADVANTAGE**