

# Wideband Modular Foldable LPDA Antenna

30 – 512 MHz

Product Code: LPDA-A0158

VERSION: 1.2

## SPECIFICATIONS:

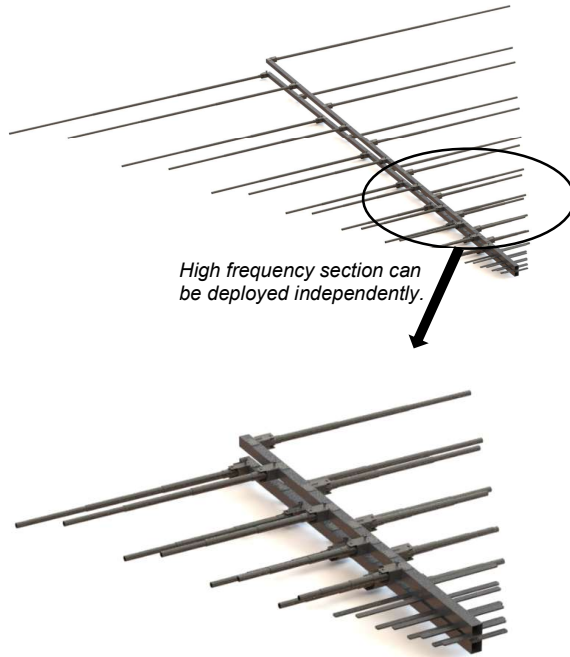


Figure 1: Full assembly and High Frequency section only in deployed configuration



Figure 2: Full Antenna in stowed configuration

<b>Product codes:</b>	
LPDA-A0158	7/16 female connector
LPDA-A0158-01	N-type female connector
LPDA-A0158-02	High power version
<b>Electrical:</b>	
Frequency range:	
Full assembly	30 – 512 MHz
High Frequency Section	100 – 512 MHz
VSWR	< 2.5:1
Nominal input impedance	50 Ω
Connector	
<b>LPDA-A0158/-02</b>	7/16 female
<b>LPDA-A0158-01</b>	N-type female
Feed power handling	
<b>LPDA-A0158</b>	1000 W
<b>LPDA-A0158-01</b>	600 W
<b>LPDA-A0158-02</b>	2000 W
Gain	See gain graph
Polarisation	Adjustable (vertical or horizontal)
<b>Mechanical:</b>	
Dimensions (full assembly - deployed)	4810 mm x 182 mm x 5350 mm
Dimensions (High Frequency section - deployed)	1521 mm x 125 mm x 1775 mm
Dimensions (full assembly - stowed)	4810mm x 182 mm x 590 mm
Dimensions (high frequency section - stowed)	1521 mm x 125 mm x 590 mm
Total mass	< 28 kg excluding isolating pole < 43 kg including isolating pole
Mounting method	On a swivel bracket fitted to the mast (requires isolation pole to change polarisation which is standard issue)

## PRODUCT DESCRIPTION:

The LPDA-A0158 is medium-gain wideband directional LPDA antenna and covers the frequency band from 30 MHz to 512 MHz.

The antenna has a modular design which allows the user to deploy either the full assembly or the high frequency section only, depending on the mission requirements.

This antenna has foldable elements which makes the antenna easy to stow and deploy. There are no loose parts and no tools required to deploy the antenna. This makes the antenna ideal for tactical applications as well as for use in harsh environments and installations where there is limited space for operators to manoeuvre.

All antenna elements are permanently attached to the boom, to prevent any parts from becoming lost in the field.

<b>Environmental: designed to meet the following specifications</b>	
Wind survival	120 km/h
Temperature (operational)	-35 °C to 71 °C
Temperature (storage)	-35 °C to 71 °C
Exposed materials	Aluminium, stainless steel

# Wideband Modular Foldable LPDA Antenna

30 – 512 MHz

Product Code: LPDA-A0158

VERSION: 1.2

