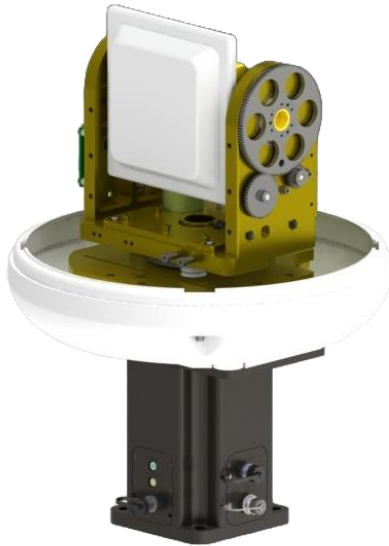


# LA-C360MPS-05-H2RF03-MA01

RADOME ENCLOSED AUTO ACQUISITION & TRACKING FOR MICROWAVE LOS



Shown without Radome Top

The LinkAlign-C360MPS-05-H2RF03-MA01 radome enclosed positioner is designed to auto acquire and actively maintain maritime Line of Sight communications for ship to ship or ship to shore, point to point or point to multipoint networks.

The embedded antenna controller has a built in GPS, digital compass, and user activated IMU for pitch/roll/yaw stabilization achieved through using Nextmove GPS Heading Unit accessory (not included). The web based user interface provides configuration and monitoring of the radio link. Additionally, Nextmove has a command line interface for customers that want to add our solution into a larger system.

The LinkAlign-C360MPT-05-MA01 is integrated with a 5 GHz unlicensed frequency band antenna (MA-WA56-DP19), which is customizable utilizing other antennas. Nextmove can also deliver a complete solution by integrating a radio into the system.

The LinkAlign-C360MPS-05-H2RF03-MA01 offers continuous azimuth travel and -10° to +100° of elevation range. Optional GPS heading unit is available upon request. Download the Interface Control Drawing (ICDN901623) for more details.

## TECHNICAL SPECIFICATIONS - LinkAlign-C360MPS-05-H2RF03-MA01

<b>Power</b>	
Power Over Ethernet (PoE)	50-57Vdc, 4 Pair PoE, PoH (Indoor Rated 54Vdc Supply Included)
Standby / Maximum Power Draw	<16W / 95W
Optional DC Input	20-60V
<b>External Material / Finish</b>	Hard coat anodized Al, SS hardware with UV stabilized white matte abs plastic radome
<b>Positioner Travel</b>	
Azimuth	Continuous
Elevation	110° (- 10° to +100°)
<b>Positioner Drive Rate</b>	
Azimuth / Elevation	Variable, up to 85°/sec no load
<b>Temperature</b>	
Operational	-22° to 140°F (-30° to 60°C) or -40° to 140°F (-40° to 60°C) with Extended Temperature Option
Survival	-40° to 158°F (-40° to 70°C)
<b>Feedback Resolution</b>	0.01
<b>Mounting Interface</b>	See ICD for details (Uses Nextmove 4.750-P Interface)
<b>Weight</b>	44 lbs (20 kg) without antenna/radio
<b>Dimensions with Radome</b>	Height: 25.58" (65.0 cm), Diameter: 17.06" (43.3 cm)
<b>Maximum Swept Volume</b>	Internal Diameter: 14.5" (36.8 cm)
<b>Antenna Details</b>	Interfaces w/ Mars MA-WA56-DP19 Antenna (Customizable utilizing other unlicensed freq. band Antennas)
Gain	19 ±1 dBi
3dB Beamwidth	16° Vertical and Horizontal
Frequency Range	4.9 - 6.1 GHz
<b>Stabilization<sup>(1)</sup></b>	User Activated
Pitch/Roll/Yaw	±0.2° / ±0.2° / ±1° (Utilizing GPS Heading Unit) (Not Included)
<b>Communication Interface</b>	
User Interfaces	Web based hosted internal to unit or Nextmove proprietary command protocol
Standard RF Cable	(2) DC-5.8GHz N-Type RF, 36" (91.5 cm) Long (Cable Type LMR-195UF)
Other	SNMP Interfaces for Acquisition and Peaking

<sup>(1)</sup> Accuracy varies depending on platform acceleration

Specifications subject to change without notice