



GAIN THE ADVANTAGE

Vehicle-Mount Dual Wideband High-Power

500 – 6000 MHz

Product Code: OMNI-A0347

VERSION: 1.2

SPECIFICATIONS:



Product Code:		
OMNI-A0347	N-Type (f) connector	
OMNI-A0347-01	4.3-10 Connector	
Electrical:		
Frequency range	500 – 6000 MHz	
Gain	0 dBi typical (in band)	
Azimuth pattern	Omni, 3 dB ripple	
Elevation pattern	Narrow beam	
Polarisation	Vertical	
Nominal impedance	50 Ω	
VSWR	< 2.5:1 or better	
Power handling:		
500 – 2000 MHz	150 W CW	
2000 – 4000 MHz	100 W CW	
4000 – 6000 MHz	80 W CW	
	OMNI-A0347	OMNI-A0347-01
Connector	2x N-type female at base	2x 4.3-10 (push/pull) at base
Groundplane requirements	Groundplane independent	
Mechanical:		
Dimensions (l x d)	1000 mm x 135 mm	
Total mass	< 5 kg	
Mounting	NATO base flange, 4 and 6 holes	
Colour	Black, others on request	
Environmental: designed to meet the following specifications		
Temperature range	Storage: -41 °C to +71 °C. Operation -31 °C to +55 °C	
Weatherproofing	IP67 water resistant (when flange is mounted)	
Exposed materials	Painted e-glass Anodized aluminium E-coated steel	

PRODUCT FEATURES:

- Omni-directional wideband antenna
- Communications or signal interception
- Covers all handheld wireless bands
- Reduces required number of antennas per vehicle

PRODUCT OVERVIEW:

This dual wideband antenna is suitable for signal interception of wireless communications. The product combines two identical antennas into one thus reducing the number of antennas required per vehicle. It is mounted on a 4/6 hole base with either 2x N-type connectors or 2x 4.3-10 push/pull connectors to allow for easy installation. The radome contains the groundplane independent radiators.

The array covers the GSM 900, PCS, UMTS/3G/LTE and Wi-Fi (both bands).

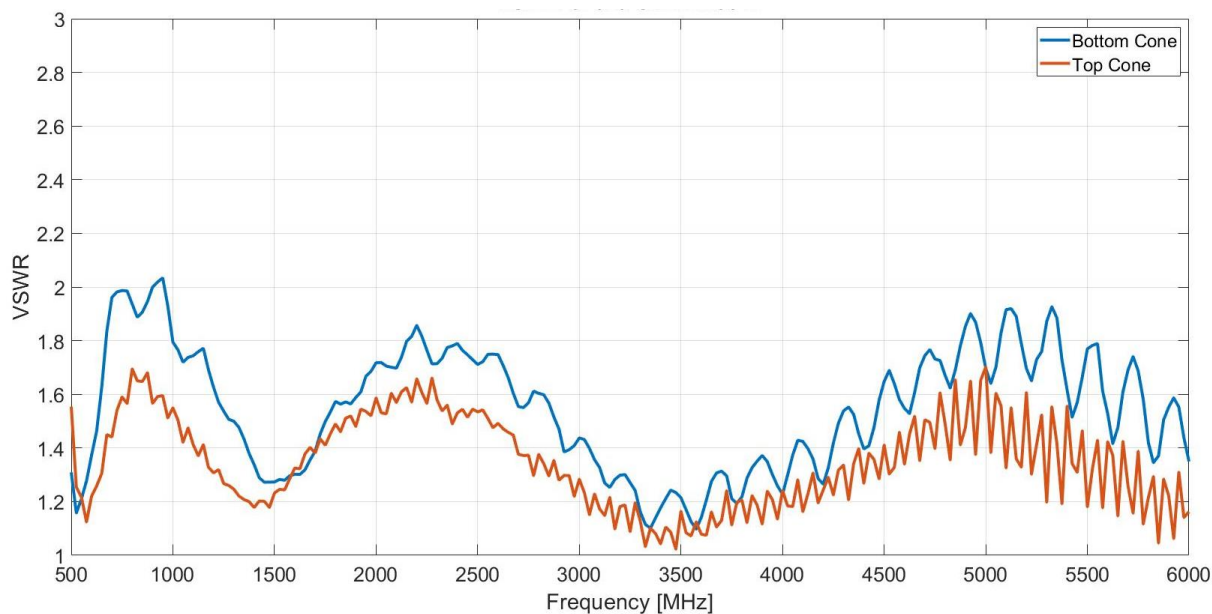
Vehicle-Mount Dual Wideband High-Power

500 – 6000 MHz

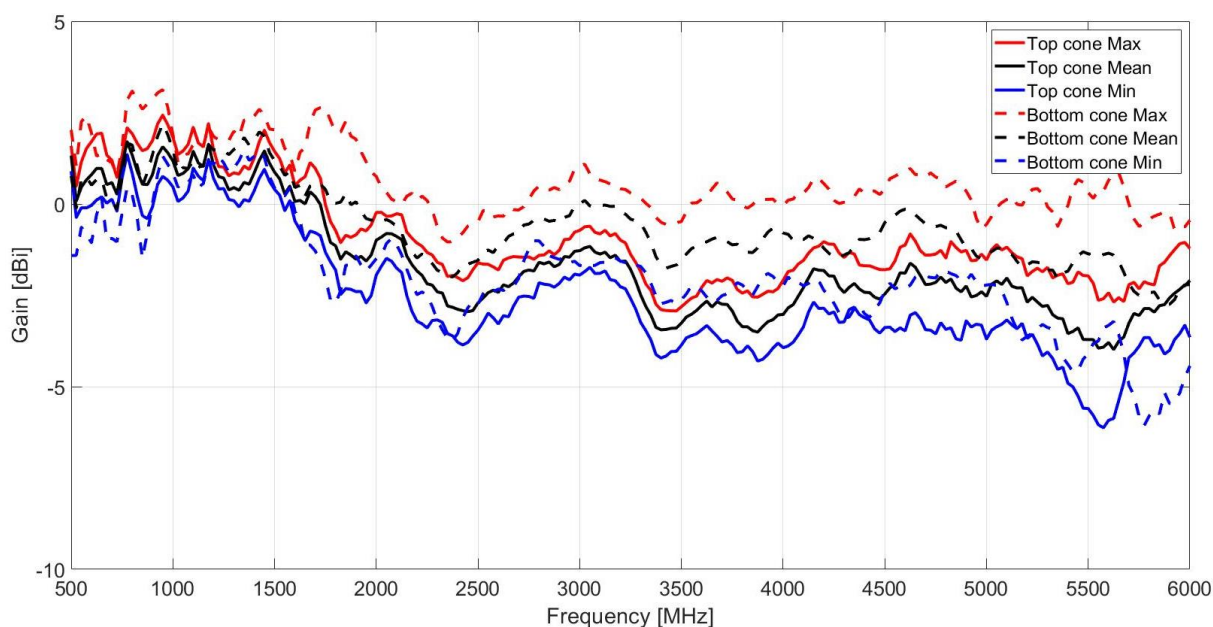
Product Code: OMNI-A0347

VERSION: 1.2

VSWR:



GAIN:



Vehicle-Mount Dual Wideband High-Power

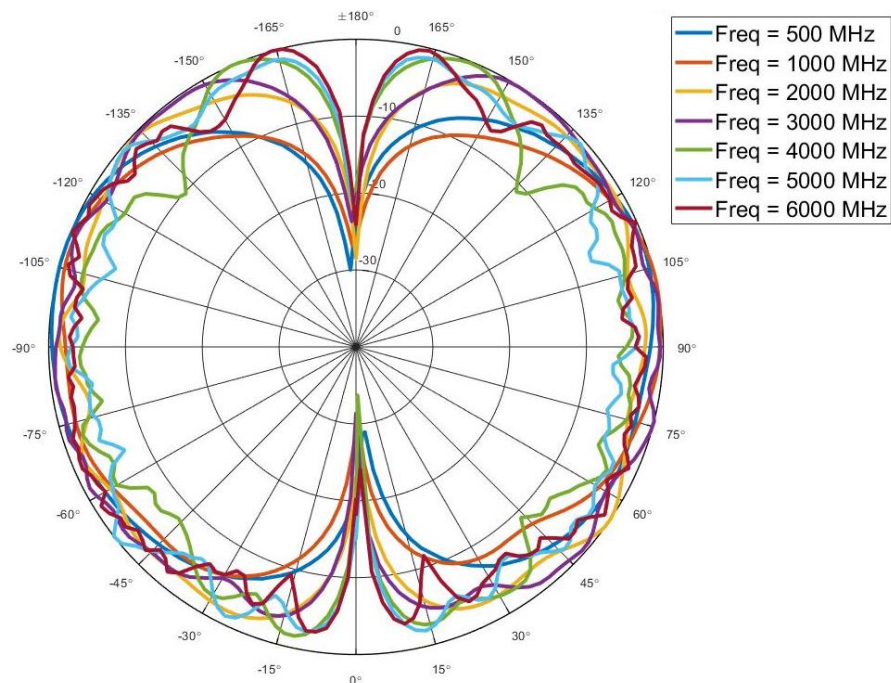
500 – 6000 MHz

Product Code: OMNI-A0347

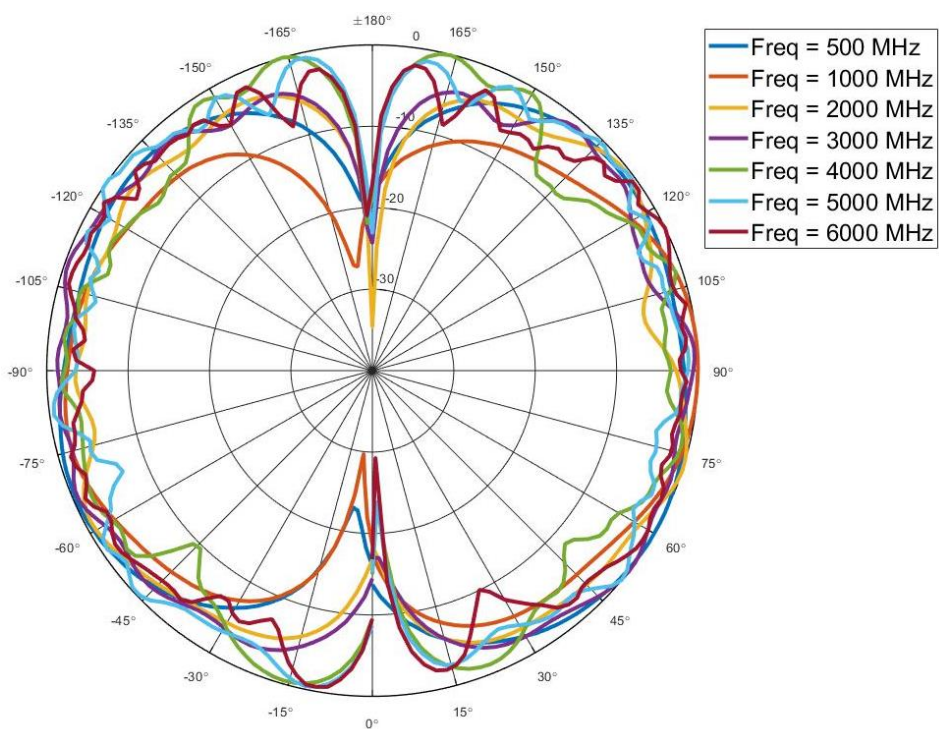
VERSION: 1.2

Radiation patterns:

Top Cone:



Bottom Cone:



Vehicle-Mount Dual Wideband High-Power

500 – 6000 MHz

Product Code: OMNI-A0347

VERSION: 1.2

Isolation:

